



FXE03 MICRO CONVERSION MODULE



VARIANTS AVAILABLE: 20V / 55V

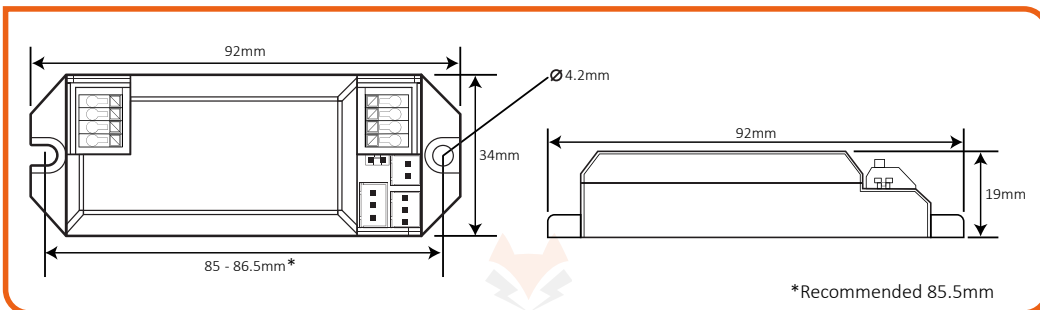
- Smallest maintained module on the UK market
- 8 year warranty including battery
- For LED arrays with a forward voltage of 2.5-20V (NM) or 10-55V (M)
- Remote control compatible with optional receiver (IR-R-03)
- Compatible with Lite!P
- Pre-commissioning feature via REM-E1

Part Number	Description	Output Voltage Range	EM Out.
FXE03S-20-NM	Micro Conversion Module - Non Maintained - Self-test	2.5V- 20V	1.5W*
FXE03S-55	Micro Conversion Module - Self-test	10V- 50V	1.8W*

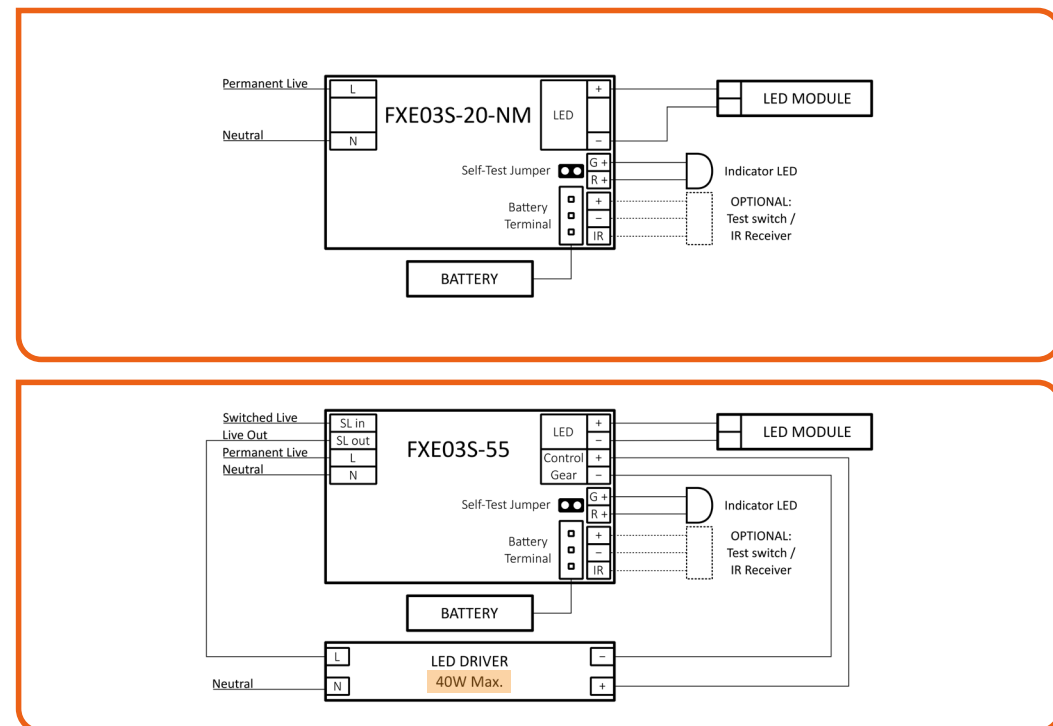
NOTE: Self-test conversion modules are configured to manual test mode by default. If self-test mode is required, it should be activated by removing the jumper on top of the module.

*Nominal emergency power output.

DIMENSIONS



WIRING DIAGRAM



Technical Data	FXE03-20	FXE03-55
Rated Supply Voltage	220-240V AC	220-240V AC
Mains Frequency	50 / 60 Hz	50 / 60 Hz
Max. Power Consumption	3W	5W
Standby Power	<0.8W	<0.8W
Emergency Output Power	1.5W nominal	1.8W nominal
LED Forward Voltage Range	2.5 to 20V	10 to 50V
Max. Output Voltage	24V DC	60V DC
Rated Emergency Duration	3 hrs*	3 hrs*
Battery Charge Time	8 hrs (Initial up to 16 hrs)	8 hrs (Initial up to 16 hrs)
Operational Temperature	0°C to 50°C	0°C to 50°C
Max. Case Temp.	70°C	70°C
Insulation Class	Reinforced	Reinforced
SELV	Yes	Yes
Battery Type	1 x 18650 Li-ion 3.6V 2.5Ah	1 x 18650 Li-ion 3.6V 2.5Ah
Battery Code	FXC3.6-2500-D300-03	FXC3.6-2500-D300-03

*To optimise long-term battery performance, the module will operate a luminaire for 3 hours before automatically shutting down.

Materials	FXE03-20	FXE03-55
Housing	Polycarbonate	Polycarbonate
Finish	Matt	Matt
Colour	White	White

LED Driver Compatibility	FXE03-20	FXE03-55
Max. Output Current of LED Driver	N/A	2A
Max. Inrush Current of LED Driver	N/A	24A
Max. Load of LED Driver	N/A	40W

Logistics Information	FXE03S-20	FXE03S-55
Product Dimensions	92 x 34 x 19mm	92 x 34 x 19mm
Net Weight	0.04kg	0.04kg
Box Dimensions	200 x 180 x 45mm	200 x 180 x 45mm
Gross Weight	0.78kg	0.78kg
Box Qty	200pcs	200pcs
Carton Dimensions	372 x 214 x 247mm	372 x 214 x 247mm
Carton Weight	8.2kg	8.2kg
Commodity Code	8504318050	8504318050

SELF-TEST

Indicator LED Guide

GREEN LED	RED LED	STATUS
On	Off	Standby
Slow Flash	Off	Charging
Fast Flash	Off	Function test or duration Test in progress
Off	On	Battery disconnected / Duration test failed
Off	Fast Flash	Battery temp. out of operational range
Off	Slow Flash	Light source faulty, disconnected or incompatible.

ACCESSORIES

1-CELL 2.5AH LI-ION BATTERY WITH FIXING PLATE



FXC3.6-2500-D300-03

Dimensions	100 x 21 x 25mm
Battery Type	1 x 18650 Li-ion 3.6V 2.5Ah
Cable Length	300mm
Gross Weight	0.05kg
Commodity Code	85065010

- 2500 mAh battery with plate mounting system.

1-CELL 2.5AH LI-ION BATTERY WITH END CAPS



FXC3.6-2500-D300

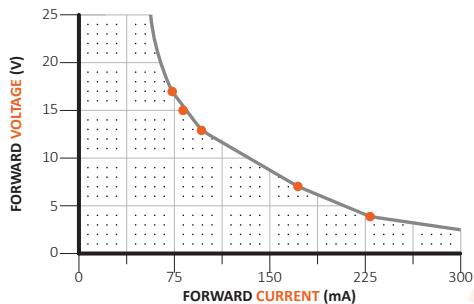
Dimensions	93 x 21 x 17mm
Battery Type	1 x 18650 Li-ion 3.6V 2.5Ah
Cable Length	300mm
Gross Weight	0.07kg
Commodity Code	85065010

- 2500 mAh battery with end cap mounting system.

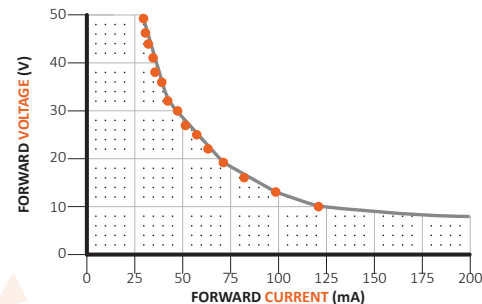
LED DRIVE CURRENT IN EMERGENCY MODE

Data provided as a guide only.
Data will vary based on type of LED chip and the LED array configuration.

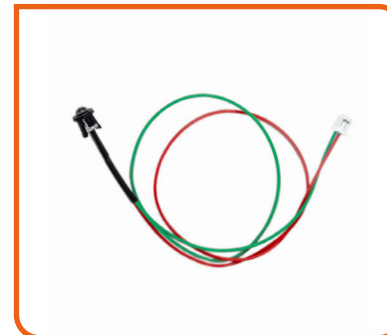
FXE03S-20-NM



FXE03S-55



RED/GREEN LED INDICATOR FOR FXE03S

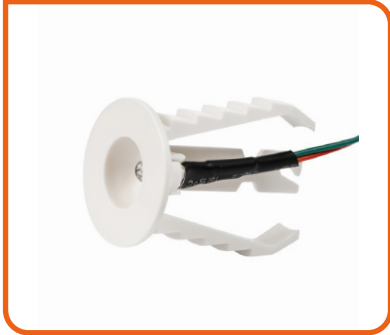


LED300RG-C-03

Dimensions	5mmØ (LED)
Mounting Hole Size	7mmØ (LED)
Cable Length	300mm
Gross Weight	< 0.01kg.
Commodity Code	85395200

- Red / green indicator with 300mm wire.

RECESSING BEZEL FOR LED INDICATOR / IR-R



BEZ01	
Dimensions	27Ø x 46mm
Cutout Size	22mm
Gross Weight	< 0.01kg
Commodity Code	94059200

- Recessing bezel for use with LED indicators and infrared receivers.

TEST BUTTON FOR FXE03S



TB04-03	
Dimensions	9mmØ x 20mm
Mounting Hole Size	7mmØ
Cable Length	300mm
Gross Weight	0.01kg
Commodity Code	94059900

- Optional manual test button for FXE03 modules.

REMOTE CONTROL



REM-E1	
Dimensions	117 x 38 x 13mm
Gross Weight	0.03kg
Commodity Code	85437003

- Infrared remote control for all Fox Lux self-test luminaires, modules and remote packs.
- Batteries not included, requires 2 x AAA.
(NOT COMPATIBLE WITH DALI-2 PRODUCTS.)

INFRARED RECEIVER FXE03S



IR-R-03	
Dimensions	5mmØ (LED)
Mounting Hole Size	7mmØ
Cable Length	300mm
Gross Weight	<0.01kg
Commodity Code	85395200

- Infrared receiver required to provide compatibility with FXE03 and REM-E1.

