



FXR04 REMOTE PACK



VARIANTS AVAILABLE: SELF-TEST / DALI-2

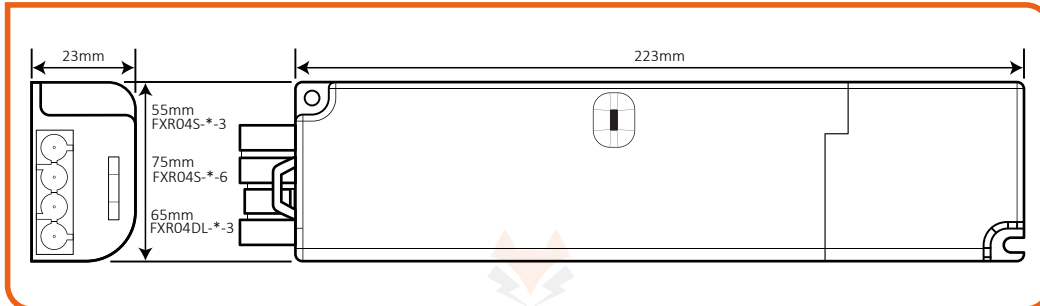
- Compatible with all popular LED panels
- Plug and Play – Twist lock connectors pre-fitted
- Compact enclosure with integral battery and strain relief
- Mains connector and LED bezel included
- Remote control compatible with optional receiver (IR-R)
- 8 Year warranty including battery



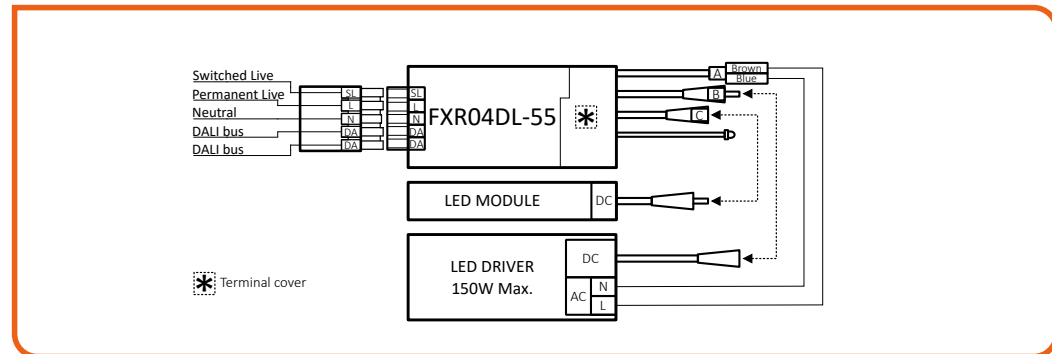
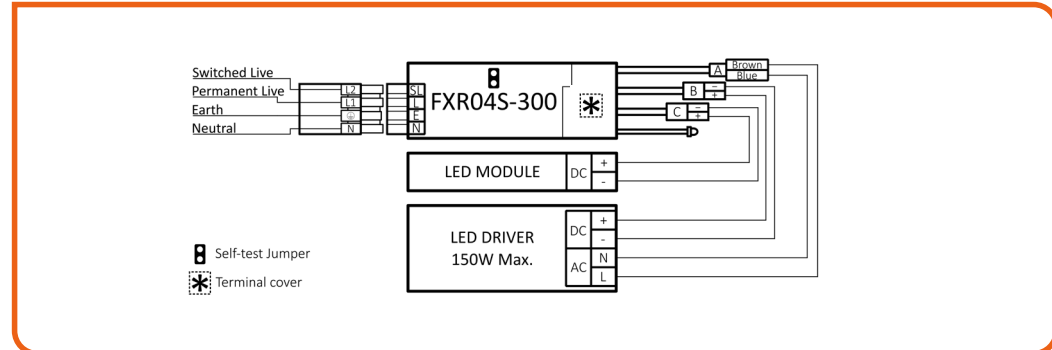
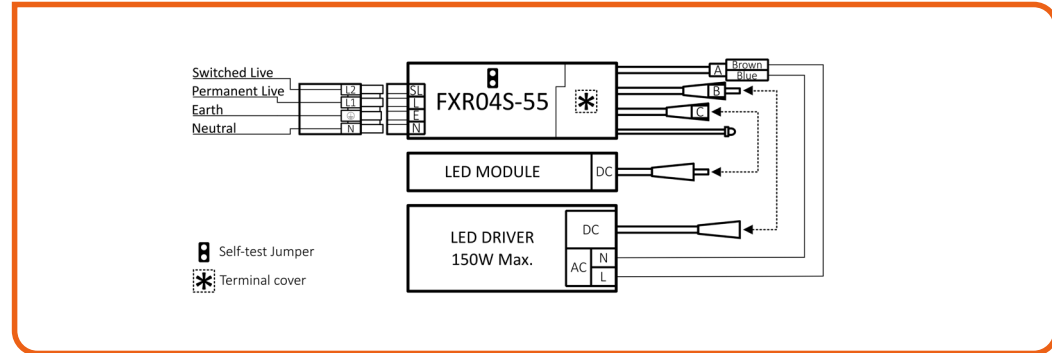
Part Number	Description	Output Voltage Range	EM Out.
FXR04S-55-3	Remote Pack- Self-test	10-50V	3W
FXR04S-55-6	Remote Pack- Self-test	10-50V	6W
FXR04S-300-3	Remote Pack- Self-test	50-300V	3W
FXR04DL-55-3	Remote Pack- DALI-2	10-50V	3W

NOTE: Self-test remote packs are configured to manual test mode by default. If self-test mode is required, it should be activated by removing the jumper on top of the pack.

DIMENSIONS



WIRING DIAGRAM



Logistics Information	FXR04S-55-3	FXR04S-55-6	FXR04S-300-3	FXR04DL-55-3
Product Dimensions	223 x 55 x 23mm	223 x 75 x 23mm	223 x 55 x 23mm	223 x 65 x 23mm
Net Weight	0.28kg	0.38kg	0.31kg	0.35kg
Box Dimensions	309 x 80 x 30mm	308 x 101 x 30mm	309 x 80 x 30mm	322 x 92 x 36mm
Gross Weight	0.32kg	0.45kg	0.32kg	0.34kg
Box Qty	24pcs	24pcs	24pcs	24pcs
Carton Dimensions	340 x 315 x 210mm	420 x 320 x 210mm	340 x 315 x 210mm	380 x 330 x 240mm
Carton Weight	8.75kg	12.10kg	9.40kg	9.60kg
Commodity Code	8504318050	8504318050	8504318050	8504318050

Data provided as a guide only.
Data will vary based on type of LED chip and the LED array configuration.

Technical Data	FXR04S-55-3	FXR04S-55-6	FXR04S-300-3	FXR04DL-55-3
Rated Supply Voltage	220-240V AC	220-240V AC	220-240V AC	220-240V AC
Mains Frequency	50 / 60 Hz	50 / 60 Hz	50 / 60 Hz	50 / 60 Hz
Max. Power Consumption	5W	5W	5W	5W
Standby Power	<0.9W	<0.9W	<0.9W	<0.9W
Emergency Output Power	3W	6W	3W	3W
LED Forward Voltage Range	10 to 50V	10 to 50V	50 to 300V	10 to 50V
Max. Output Voltage	60V DC	60V DC	310V DC	60V DC
Rated Emergency Duration	3 hrs*	3 hrs*	3 hrs*	> 3 hrs
Battery Charge Time	8 hrs (Initial up to 16 hrs)	8 hrs (Initial up to 16 hrs)	8 hrs (Initial up to 16 hrs)	20 hrs
Operational Temperature	0°C to 45°C	0°C to 45°C	0°C to 45°C	0°C to 45°C
Max. Case Temp.	70°C	70°C	70°C	70°C
Insulation Class	II	II	II	II
SELV	Yes	Yes	No	Yes
Battery Type	2 x 18650 Li-ion 3.6V 5.0Ah	4 x 18650 Li-ion 3.6V 10.0Ah	2 x 18650 Li-ion 3.6V 5.0Ah	2 x 18650 Li-ion 3.6V 5.0Ah
Battery Code	FXC3.6-5000-E75	FXC3.6-10000-E75	FXC3.6-5000-E75	FXC3.6-5000-E75

*To optimise long-term battery performance, the remote pack will operate a luminaire for 3 hours before automatically shutting down.

Materials

Housing	Polycarbonate
Finish	Matt
Colour	White
Screws	Nickel Steel

LED Driver Compatibility

	FXR04-55*	FXR04-300*
Max. Output Current of LED Driver	2A	2A
Max. Inrush Current of LED Driver	60A	60A
Max. Load of LED Driver	150W	150W

SELF-TEST

Indicator LED Status

GREEN LED	RED LED	STATUS
On	Off	Standby
Slow Flash	Off	Charging
Fast Flash	Off	Function test or duration test in progress
Off	On	Battery disconnected / Duration test failed
Off	Fast Flash	Battery temperature out of operational range
Off	Slow Flash	Light source faulty, disconnected or incompatible.

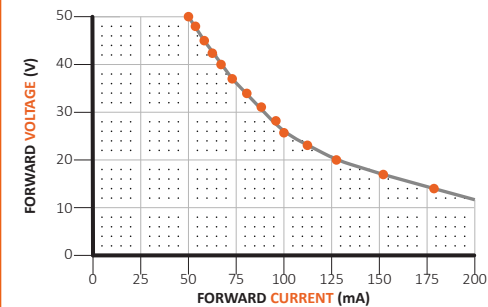
DALI-2

Indicator LED Status

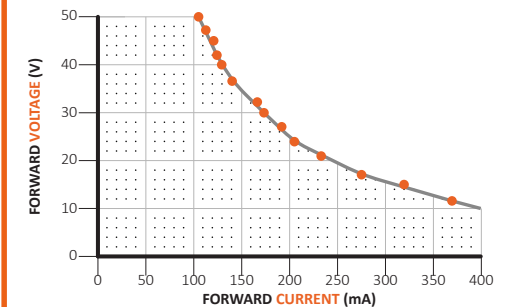
GREEN LED	RED LED	STATUS
On	Off	Standby
Slow Flash	Off	Duration test in progress
Fast Flash	Off	Function test in progress
Off	On	Battery temperature out of operational range
Off	Slow Flash	Battery disconnected / Duration test failed
Off	Fast Flash	Battery low voltage.
Off	Off	Emergency function in operation
Alternating Green > Red > Green...		DALI-2 identifying code

LED DRIVE CURRENT IN EMERGENCY MODE

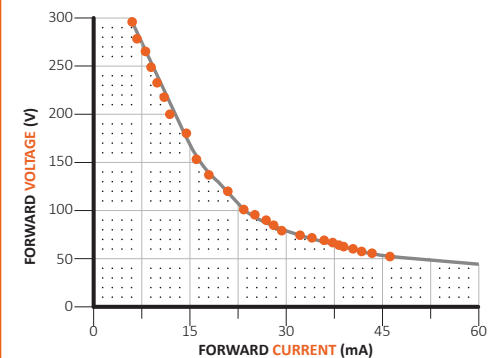
FXR04S-55-3



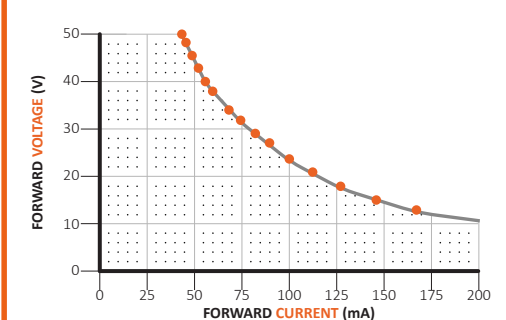
FXR04S-55-6



FXR04S-300-3



FXR04DL-55-3



ACCESSORIES

REMOTE CONTROL



REM-E1

Dimensions	117 x 38 x 13mm
Gross Weight	0.03kg
Commodity Code	85437003

- Infrared remote control for all Fox Lux self-test luminaires, modules and remote packs.
- Batteries not included, requires 2 x AAA.
(NOT COMPATIBLE WITH DALI-2 PRODUCTS.)



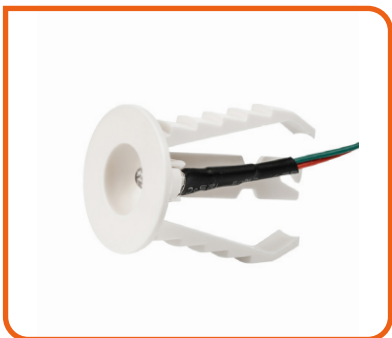
INFRARED RECEIVER



IR-R	
Dimensions	5mmØ (LED)
Mounting Hole Size	7mmØ
Cable Length	600mm
Gross Weight	0.02kg
Commodity Code	85395200

- Infrared receiver required to allow compatibility with REM-E1 remote control.
- *NOT COMPATIBLE WITH DALI-2*

RECESSING BEZEL FOR LED INDICATOR / IR-R



BEZ01	
Dimensions	27Ø x 46mm
Cutout Size	22mmØ
Gross Weight	< 0.01kg
Commodity Code	94059200

- Recessing bezel for use with LED indicators and infrared receivers.
- Comes as standard with every FXR04.

