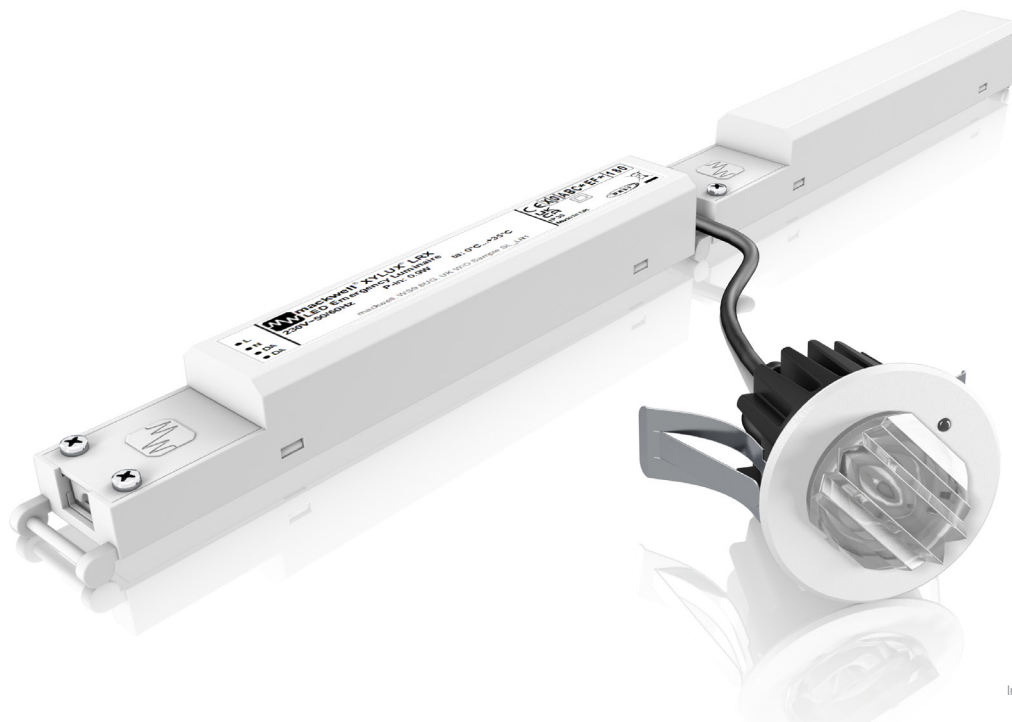




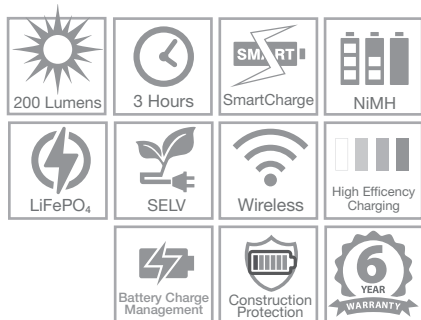
XYLUX LRX

Emergency LED Luminaire with Interchangeable Optics



Images are for illustrative purposes only

XYLUX® LRX



Emergency LED
Luminaire



Discrete LED Emergency Lighting

The XYLUX LRX is an ultra-discreet recessed LED emergency luminaire. Supplied with three snap-in optics for Open Area, Escape Route and Emphasis Point distribution, it's unique articulated design provides a robust and easy to install solution.

Compatible with a variety of automated test & monitoring protocols; including DALI-2* and AIR the XYLUX LRX represents the ultimate in multi-application emergency lighting that complements the overall aesthetic interior design.

Designed and manufactured in the UK the XYLUX LRX is a practical alternative to standard emergency luminaires and offers an unobtrusive powerful emergency lighting solution.

Key features:

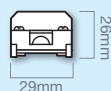
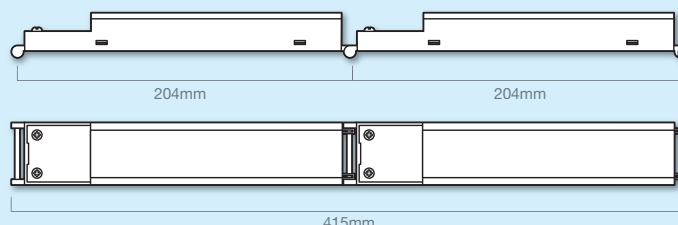
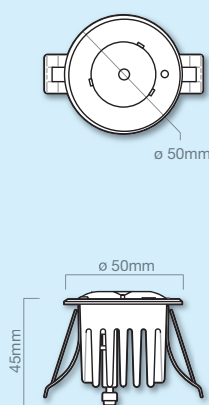
- Miniature design blends into the architectural environment
- Available with choice of MW-LiFe and NiMH intelligent battery technologies
- Interchangeable advanced optics inc. Open Area, Escape Route, & Emphasis Point lenses
- Integral status indicator
- DALI 2 level interoperability*
- ORIGIN 2.0 battery management
- Wireless (N-Light AIR), DALI-2*, DALI, and Standard technology options available
- Available in non-maintained operation
- Articulated control gear for easy installation
- SmartCharge™ technology with NiMH battery option
- IP30 ingress protection as standard with up to IP65 front protection available on request
- In White & Black as standard
- 6 years warranty



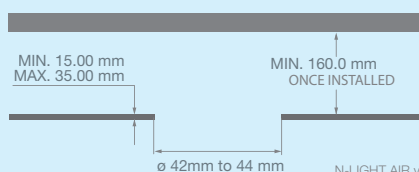
XYLUX LRX

Emergency LED Luminaire with Interchangeable Optics

Dimensions



Installation Dimensions



N-LIGHT AIR versions are supplied with additional wireless node. Please contact Mackwell for drawing if required

Specifications

Supply voltage	: 220 - 240 V
Supply frequency	: 50/60 Hz
Supply current NiMH	: 12 mA
Supply current LiFePO ₄	: 16 mA
Power factor	: 0.58
Total circuit power NiMH	: 0.6 - 0.9 W
Total circuit power LiFePO ₄	: 0.2 - 1.3 W
Ambient temperature (ta)	: 0°C to +35°C
Protection class	: Class II
Conductor size	: 0.75 to 1.5mm ²
Battery charge current	
NiMH	: 100 mA
LiFePO ₄	: 200 mA
Emergency duration	: 3 hours
Recharge period	: 24 hours
Weight of control gear	: 240g
Lumen output (nominal)	: 200 lm
IP rating	: IP30
CCT	: 5700 K
Weight of lamphead	: 65g

Relevant Standards

EN 55015	BS 5266-1
EN 61000-3-2	EN 62034
EN 61000-3-3	EN 62386
EN 61547	EN 62031
EN 60598-2-22	EN 62471

Batteries

The XYLUX LRX is available with a range of rechargeable battery options. For 1 hour emergency operation, please contact Mackwell for further details.

Features

Origin 2.0 is an intelligent technology platform with diagnostic capabilities that enables us to understand and control the effects of environmental factors on the efficiency and reliability of our emergency drivers.

Battery Charge Management applies an intermittent charging duty cycle designed for use with NiMH & LiFePO₄ batteries. This provides energy efficient charging maintenance, reduced operating temperatures and optimum service life of NiMH & LiFePO₄ batteries.

Technology Options

Standard

For applications where self-testing is not required or suitable, the non-AutoTest® option provides the same quality and performance expected of Mackwell products, without the AutoTest® feature.

DALI & DALI-2*

DALI provides benefits by enabling testing and monitoring of an emergency lighting system via a standardised protocol, either on-site or via an internet connection. DALI is ideal for monitoring larger buildings and multiple sites. DALI-2 is the new generation of the standard that has now been extended to include emergency lighting. This improves interoperability and in future will introduce sophisticated diagnostic capabilities. All DALI products default to standalone AutoTest when not connected to a DALI network.

N-LIGHT AIR Wireless

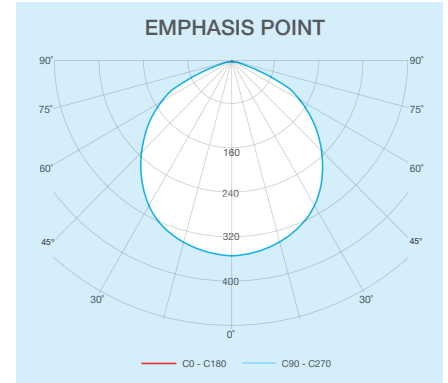
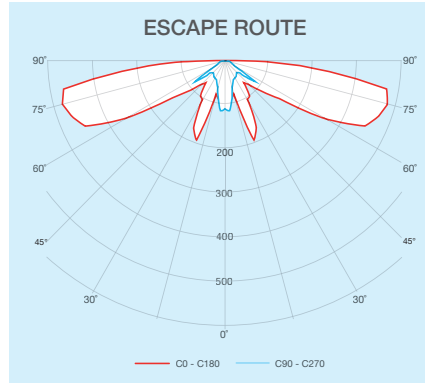
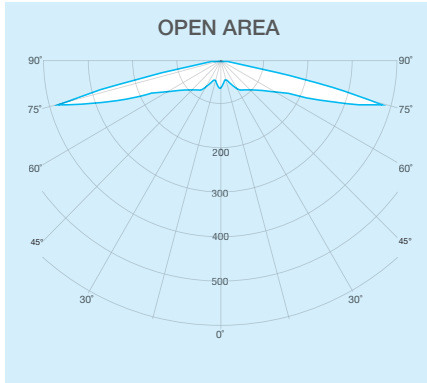
Wireless emergency lighting allows devices to communicate through radio waves instead of hard-wiring. This makes it particularly attractive for retrofitting existing buildings, and increases flexibility when adding, removing, and replacing devices. Mackwell products suitable for N-LIGHT AIR use an 868MHz mesh topology which allows for long distances to be achieved between devices.



Photometric details

XYLUX LRX

Emergency LED Luminaire with Interchangeable Optics



Spacing information

Open-Area (based on min. 0.5 lux)

Mounting Height (m)	Distance Luminaire to Luminaire (m)
2.0	12.5
3.0	16.0
4.0	13.0
5.0	11.0

Escape Route (based on min. 1 lux)

Mounting Height (m)	Distance Luminaire to Luminaire (m)
2.0	14.5
3.0	22.0
4.0	22.0
5.0	16.0

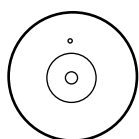
Note:

The spacing tables are provided as a guide only.

Due to the nature of creating generic lighting schemes, all schemes should be simulated or calculated in full, representing as accurately as possible the final application, and ensuring compliance with local regulations.



Lamphead shape and colour options:



Round - White



Round - Black

Standard colours is white & black additional colours available on request

XYLUX LRX

Emergency LED Luminaire with Interchangeable Optics

Order codes

Standard

Order Code	Description
9006279	XYLUX LRX IP30 with NiMH in White
9006285	XYLUX LRX IP30 with NiMH in Black
9006282	XYLUX LRX IP30 with LiFePO4 in White
9006288	XYLUX LRX IP30 with LiFePO4 in Black

DALI/DALI-2*

Order Code	Description
9006280	XYLUX LRX IP30 with NiMH in White
9006286	XYLUX LRX IP30 with NiMH in Black
9006283	XYLUX LRX IP30 with LiFePO4 in White
9006289	XYLUX LRX IP30 with LiFePO4 in Black

N-LIGHT AIR - Wireless

Order Code	Description
9006281	XYLUX LRX IP30 with NiMH in White
9006287	XYLUX LRX IP30 with NiMH in Black
9006284	XYLUX LRX IP30 with LiFePO4 in White
9006290	XYLUX LRX IP30 with LiFePO4 in Black



* DALI variants are available now. The DALI-2 version are currently under development.

Mackwell maintains a policy of continuous development and reserves the right to change the details shown on this data sheet without prior notice.

The contents are intended for guidance only.

Mackwell, Vigo Place, Aldridge,
West Midlands WS9 8UG.
Tel. +44 (0) 1922 458 255
Company Reg No: 1414873.
VAT Reg No GB330230618

DS112_Issue-2_February_2023